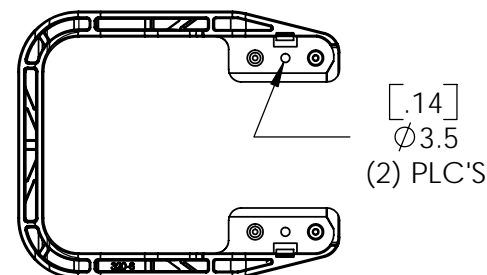
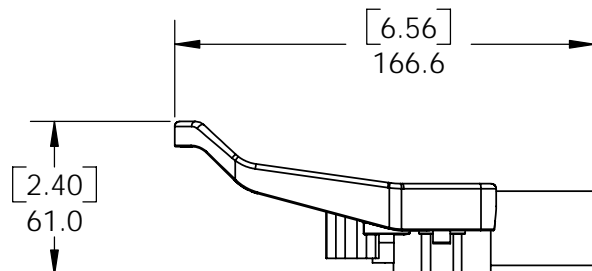
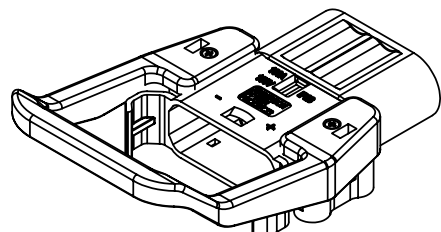
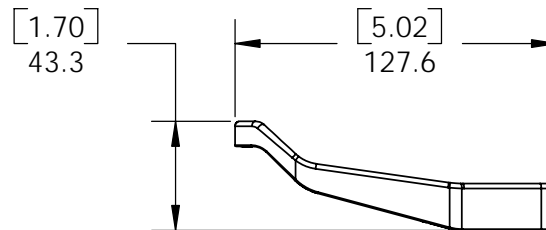
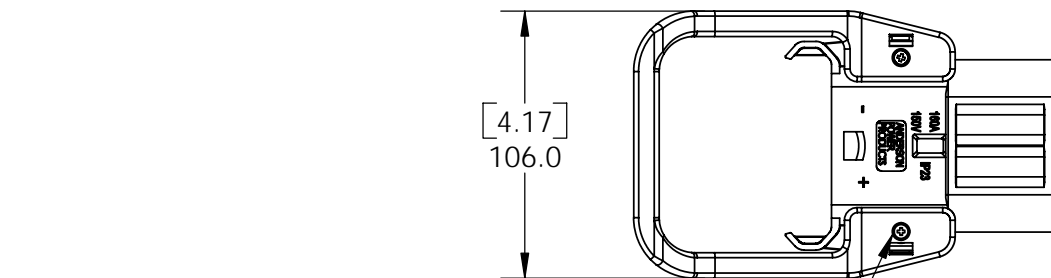


THE INFORMATION CONTAINED IN THIS DRAWING IS THE SOLE PROPERTY OF ANDERSON POWER PRODUCTS. ANY REPRODUCTION IN PART OR WHOLE WITHOUT THE WRITTEN PERMISSION OF ANDERSON POWER PRODUCTS IS PROHIBITED.

Copyright 2006

ANDERSON POWER PRODUCTS RESERVES THE RIGHT TO ALTER PRODUCT TYPES, THEIR TECHNICAL DATA, DIMENSION, STYLE AND ACCESSORIES WITHOUT PRIOR NOTIFICATION.



- NOTES:
 1. KIT INCLUDES HANDLE AND (2) SELF-TAPPING SCREWS
 2. FOR USE WITH 160A & 320A CONNECTORS

PART NO.	DESCRIPTION	COLOR	MATERIAL
EP32-89	160/320 HANDLE KIT	GRAY	PBT-PC BLEND
E32-89	160/320 HANDLE KIT	GRAY	POLYPROPYLENE
32-89	160/320 HANDLE KIT	BLACK	NYLON

DIMENSIONS ARE IN:	MM[INCH]
UNLESS OTHERWISE STATED	
TOLERANCES:	
DECIMALS (INCH)	DECIMALS (MM) ANGLES
XX ±.02	X ±.5 ±2°
SURFACE FINISH:	
MACHINED	128 [3.2] ✓
MOLDED	64 [1.6] ✓
MATERIAL: SEE DATA SHEETS FOR MATERIAL SPECS	
FINISH:	N/A

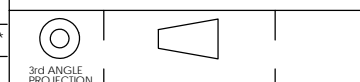
APPROVALS	
DRAWN	AMS 04/25/06
CHECKED	DJD 04/25/06
MFG APP	CHB 04/25/06
QC APP	HN 04/25/06
ENG APP	DAM 04/25/06

ANDERSON POWER PRODUCTS

TITLE

SALES OUTLINE
 HIGH PROFILE HANDLE
 FOR 160A & 320A CONNECTORS

SIZE: A/A4 DWG NO.: E320-8S1 REV.: 0



-CAD GENERATED DRAWING-
 DO NOT MANUALLY UPDATE
 DO NOT SCALE

REV.	DESCRIPTION OF CHANGES	APPROVED	DATE

SCALE	CADFILE	SHEET
NONE	02525	1 OF 1