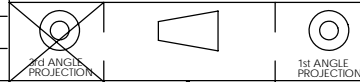


DIMENSIONS ARE IN:	<input checked="" type="checkbox"/> INCH[MM]	<input type="checkbox"/> MM[INCH]
UNLESS OTHERWISE STATED		
TOLERANCES:		
DECIMALS (INCH)	DECIMALS (MM)	ANGLES
XX ±.02	X ±.5	±2°
SURFACE FINISH:		
MACHINED	128 [3.2]	✓
MOLDED	64 [1.6]	✓
MATERIAL: COPPER ALLOY		
FINISH: SILVER PLATE		

APPROVALS	
DRAWN	AMP 8/30/05
CHECKED	LH 8/31/05
MFG APP	CHB 8/30/05
QC APP	FR 8/31/05
ENG APP	DAM 8/30/05

<b>ANDERSON POWER PRODUCTS</b>		
<b>TITLE</b> <b>SALES OUTLINE</b> DIN AUX. SOCKET CONTACT FOR 80A CONNECTORS (CAT. NO. E80-33 FOR 1.5 OR 2.5MM <sup>2</sup> WIRE)		
SIZE	DWG NO.	REV.
A/A4	E80-33S1	1
SCALE	CADFILE	SHEET
NONE	02390	1 OF 1

1	ECRN 13970 - REDUCE LENGTH OF CRIMP BARREL BY 1MM	AMS	02/28/06
REV.	DESCRIPTION OF CHANGES	APPROVED	DATE

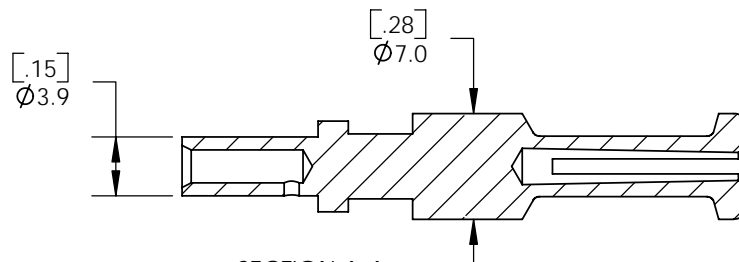
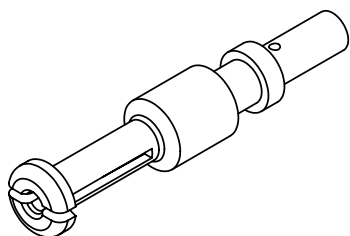
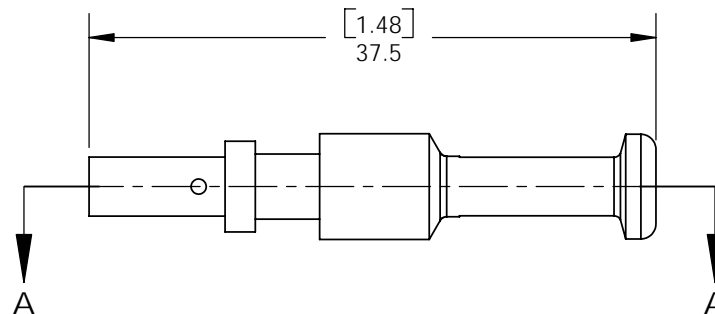
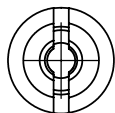


-CAD GENERATED DRAWING-  
DO NOT MANUALLY UPDATE  
DO NOT SCALE

THE INFORMATION CONTAINED IN THIS DRAWING IS THE SOLE PROPERTY OF ANDERSON POWER PRODUCTS. ANY REPRODUCTION IN PART OR WHOLE WITHOUT THE WRITTEN PERMISSION OF ANDERSON POWER PRODUCTS IS PROHIBITED.

Copyright 2005

ANDERSON POWER PRODUCTS RESERVES THE RIGHT TO ALTER PRODUCT TYPES, THEIR TECHNICAL DATA, DIMENSION, STYLE AND ACCESSORIES WITHOUT PRIOR NOTIFICATION.



SECTION A-A  
SCALE 2 : 1

DIMENSIONS ARE IN:		INCH[MM]	MM[INCH]	APPROVALS		 <b>ANDERSON POWER PRODUCTS</b>
UNLESS OTHERWISE STATED				DRAWN	AMP	
TOLERANCES:				CHECKED	LH	8/31/05
DECIMALS (INCH)	DECIMALS (MM)	ANGLES		MFG APP	CHB	8/30/05
XX ± .02	X ± .5	± 2°		QC APP	FR	8/31/05
SURFACE FINISH:				ENG APP	DAM	8/30/05
MACHINED		128 [3.2]	✓	SIZE	A/A4	DWG NO.
MOLDED		64 [1.6]	✓	SCALE	NONE	E80-31 S1
MATERIAL: COPPER ALLOY				REV.		0
FINISH: SILVER PLATE				CADFILE		02388
 				SHEET		1 OF 1
* ***** ** *****				-CAD GENERATED DRAWING- DO NOT MANUALLY UPDATE DO NOT SCALE		
REV.	DESCRIPTION OF CHANGES	APPROVED	DATE			

8	7	6	5	4	3	2	1
---	---	---	---	---	---	---	---