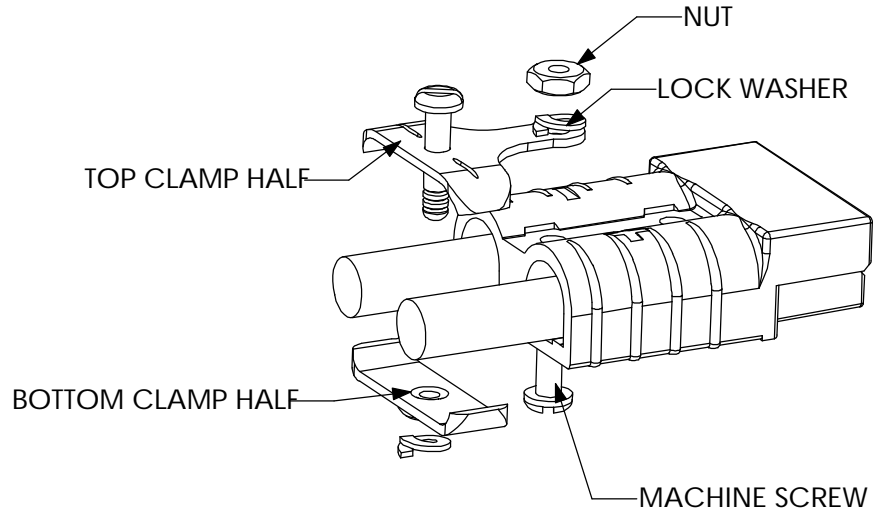
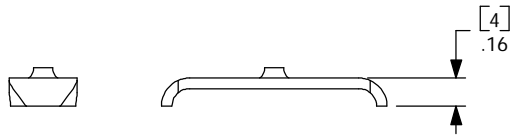
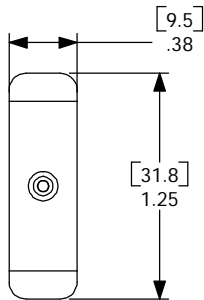
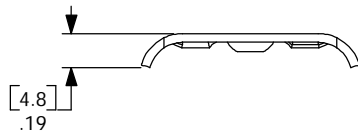
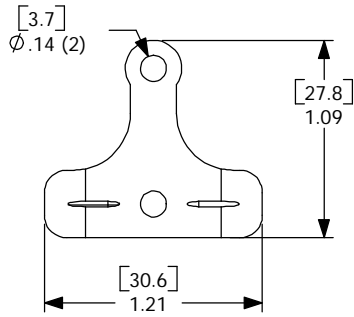


THE INFORMATION CONTAINED IN THIS DRAWING IS THE SOLE PROPERTY OF ANDERSON POWER PRODUCTS. ANY REPRODUCTION IN PART OR WHOLE WITHOUT THE WRITTEN PERMISSION OF ANDERSON POWER PRODUCTS IS PROHIBITED.

DATE	
BY:	
DESCRIPTION OF CHANGES	
REV.	



NOTES:

1. MATERIAL: STEEL, ZINC/YELLOW PLATE
2. HARWARE KIT INCLUDES TWO MACHINE SCREWS, TWO LOCK WASHERS, AND TWO NUTS
3. USE WITH SINGLE CONDUCTOR CABLE
4. CONNECTOR SOLD SEPARATELY

ITEM NO.	PART OR IDENTIFYING NO.	NOMENCLATURE OR DESCRIPTION	MATERIAL SPECIFICATION	QTY RECD
COPYRIGHT 2000 ANDERSON POWER PRODUCTS. ALL RIGHTS RESERVED. UNAUTHORIZED REPRODUCTION HEREBY PROHIBITED				
DIMENSIONS ARE IN INCHES DIMENSIONS IN PARENTHESES [] ARE IN MILLIMETERS		CAD GENERATED DRAWING. DO NOT MANUALLY UPDATE		ANDERSON POWER PRODUCTS
TOLERANCES ARE: 2PL- ±.02 [±.5]		APPROVALS	DATE	
MATERIALS: SEE NOTES		DRAWN	CMS 2/2/00	CATALOG NUMBER 990G1 SB50 CABLE CLAMP FOR SINGLE CONDUCTOR CABLE
FINISH SEE NOTES		CHECKED	DJD 2/3/00	
NEXT ASSY		USED ON	RESP ENG	*** *****
APPLICATION		DO NOT SCALE DRAWING	MFG ENG	*** *****
			QUAL ENG	*** *****
			SCALE	NONE
			CADFILES/01185	SHEET 1 OF 1
			SIZE	A
			SPECIFICATION:	114227S1
			REV.	0