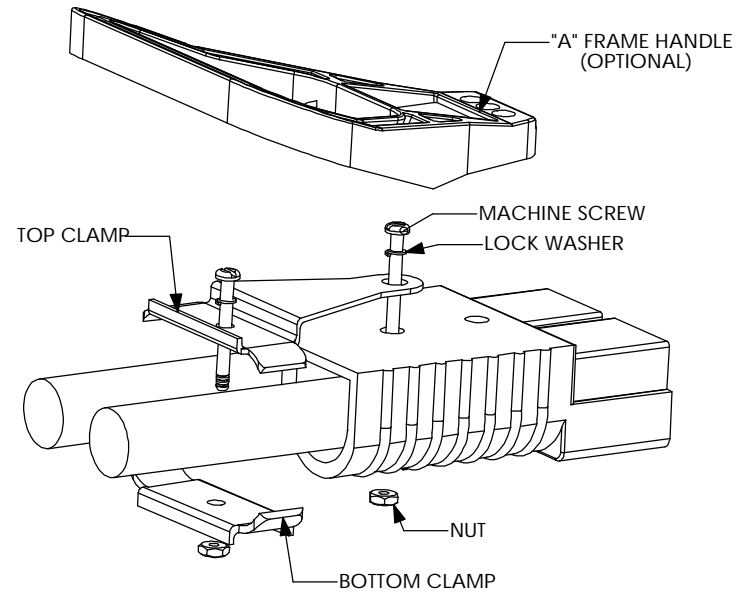
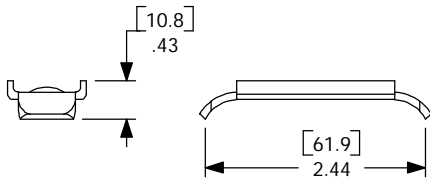
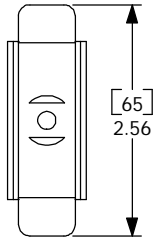
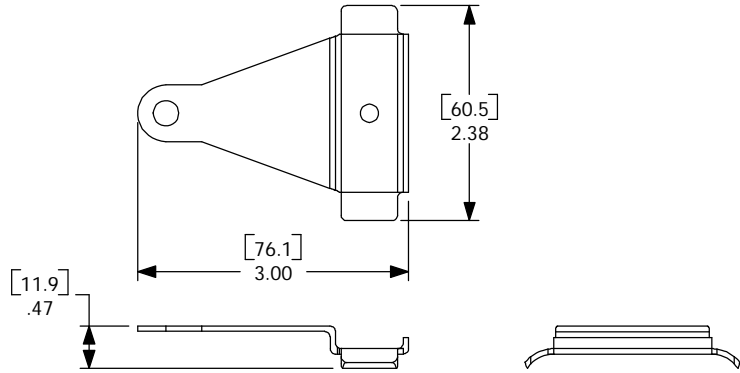


THE INFORMATION CONTAINED IN THIS DRAWING IS THE SOLE PROPERTY OF ANDERSON POWER PRODUCTS. ANY REPRODUCTION IN PART OR WHOLE WITHOUT THE WRITTEN PERMISSION OF ANDERSON POWER PRODUCTS IS PROHIBITED.

REV.	DESCRIPTION OF CHANGES	BY:	DATE



ITEM NO.	PART OR IDENTIFYING NO.	NOMENCLATURE OR DESCRIPTION	MATERIAL SPECIFICATION	QTY REQD
COPYRIGHT 2000 ANDERSON POWER PRODUCTS. ALL RIGHTS RESERVED. UNAUTHORIZED REPRODUCTION HEREBY PROHIBITED.				
DIMENSIONS ARE IN INCHES DIMENSIONS IN PARENTHESES [] ARE IN MILLIMETERS		CAD GENERATED DRAWING. DO NOT MANUALLY UPDATE		ANDERSON POWER PRODUCTS
TOLERANCES ARE: 2PL- ±.02 [±.5]		APPROVALS	DATE	
MATERIALS: SEE NOTES		DRAWN	CMS 2/9/00	CATALOG NUMBER 996G1 SB350 CABLE CLAMP FOR TWO SINGLE CONDUCTOR CABLES
FINISH SEE NOTES		CHECKED	DJD 2/10/00	
NEXT ASSY		RESP ENG	UFN 5/8/00	
USED ON		MFG ENG	CHB 4/28/00	
APPLICATION		QUAL ENG	RPO 5/8/00	REV. 0
DO NOT SCALE DRAWING		SCALE	NONE	SHEET 1 OF 1
		CADFILES/01193		

NEXT ASSY	USED ON
APPLICATION	