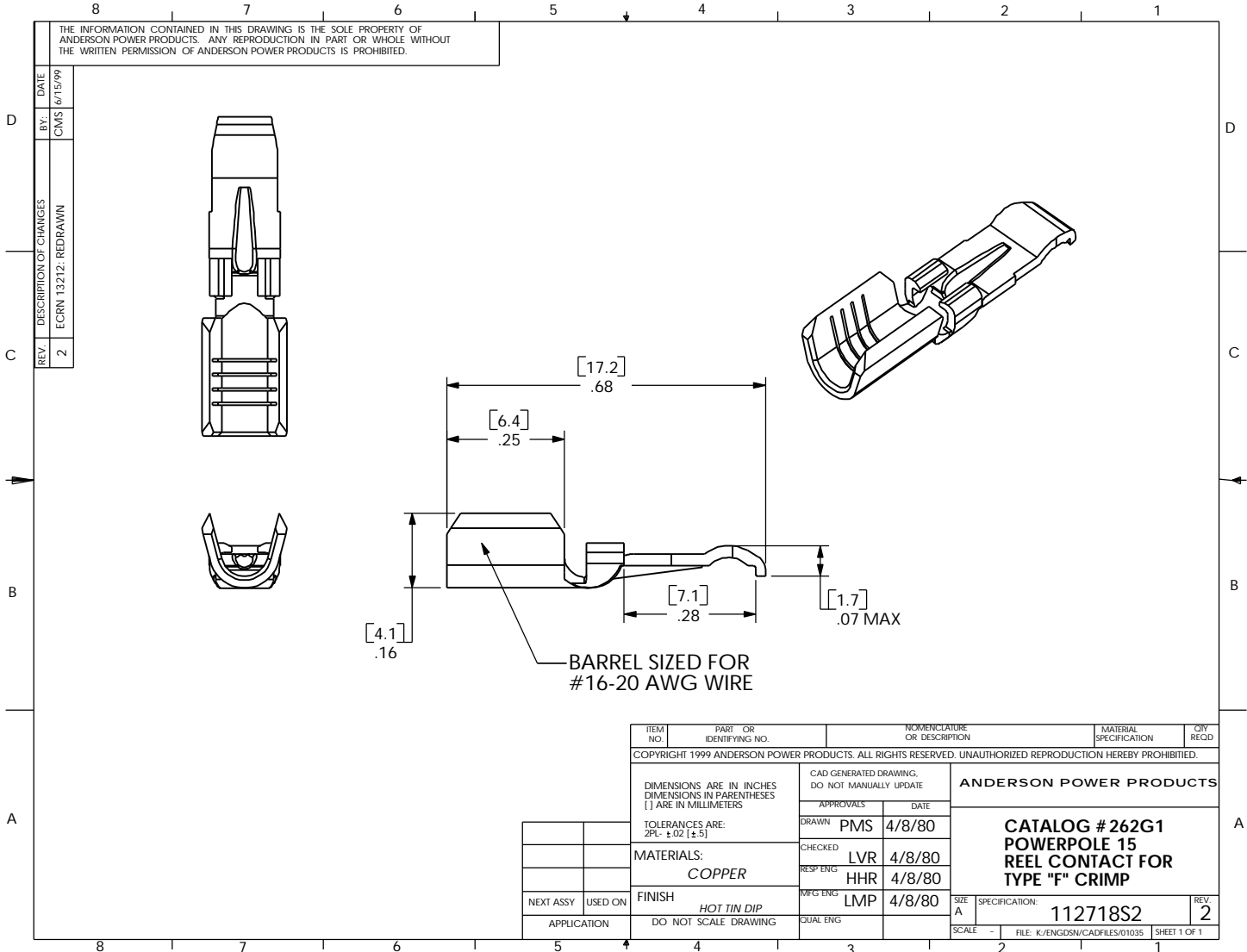


THE INFORMATION CONTAINED IN THIS DRAWING IS THE SOLE PROPERTY OF ANDERSON POWER PRODUCTS. ANY REPRODUCTION IN PART OR WHOLE WITHOUT THE WRITTEN PERMISSION OF ANDERSON POWER PRODUCTS IS PROHIBITED.



BARREL SIZED FOR  
#16-20 AWG WIRE

ITEM NO.	PART OR IDENTIFYING NO.	NOMENCLATURE OR DESCRIPTION	MATERIAL SPECIFICATION	QTY REQD
COPYRIGHT 1999 ANDERSON POWER PRODUCTS. ALL RIGHTS RESERVED. UNAUTHORIZED REPRODUCTION HEREBY PROHIBITED.				
DIMENSIONS ARE IN INCHES DIMENSIONS IN PARENTHESES ( ) ARE IN MILLIMETERS		CAD GENERATED DRAWING. DO NOT MANUALLY UPDATE		
TOLERANCES ARE: 2PL: ±.02 (±.5)		APPROVALS DATE		
MATERIALS: <i>COPPER</i>		DRAWN PMS 4/8/80		
FINISH <i>HOT TIN DIP</i>		CHECKED LVR 4/8/80		
NEXT ASSY USED ON		RESP ENG HHR 4/8/80		
APPLICATION		MFG ENG LMP 4/8/80		
DO NOT SCALE DRAWING		SHEET 2 OF 1		
SIZE A		SPECIFICATION: 112718S2		REV 2
SCALE -		FILE: K:/ENGDSN/CADFILES/01035 SHEET 1 OF 1		

**ANDERSON POWER PRODUCTS**  
**CATALOG # 262G1**  
**POWERPOLE 15**  
**REEL CONTACT FOR**  
**TYPE "F" CRIMP**