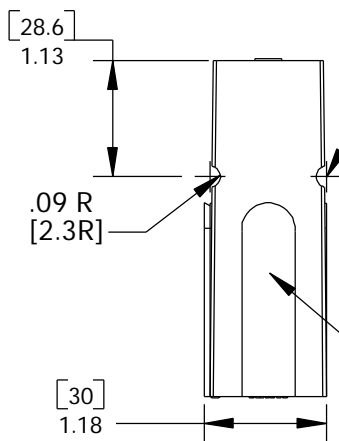


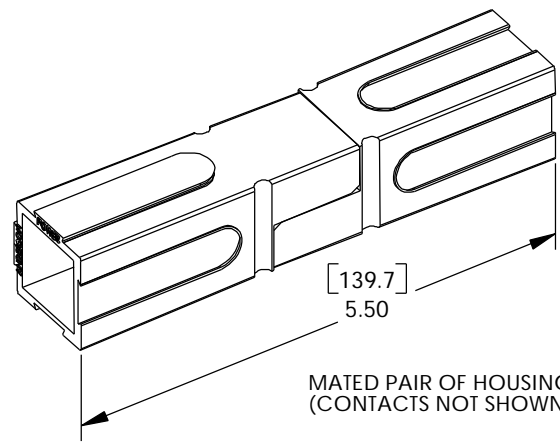
THE INFORMATION CONTAINED IN THIS DRAWING IS THE SOLE PROPERTY OF ANDERSON POWER PRODUCTS. ANY REPRODUCTION IN PART OR WHOLE WITHOUT THE WRITTEN PERMISSION OF ANDERSON POWER PRODUCTS IS PROHIBITED.

REV.	DESCRIPTION OF CHANGES	BY:	DATE
5	UPDATED TO CAD (ECRN 13058)	CGC	4/23/98

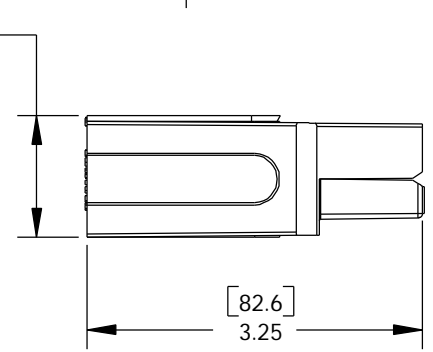
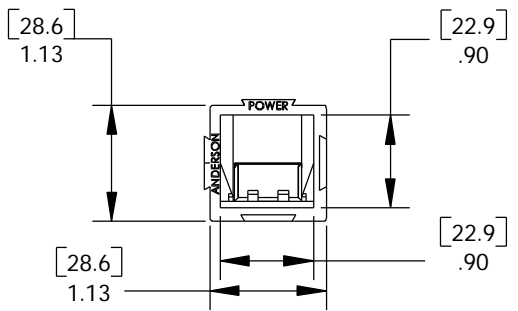


WHEN MATED SIDE TO SIDE, HALF-ROUNDS ALIGN TO FORM A SLOT FOR ROLL PIN INSERTION, WHICH PROTECTS AGAINST ACCIDENTAL DISLODGING OF MATED HOUSINGS.

DOVETAILS ALLOW STACKING IN VERTICAL, HORIZONTAL, OR IN BLOCK CONFIGURATIONS.



MATED PAIR OF HOUSINGS (CONTACTS NOT SHOWN)



CAT. NO.	COLOR
1381	BLUE
1381G1	BLACK
1381G2	WHITE
1381G3	RED
1381G4	GREEN

NOTES:

1. SPRING/HOUSING ASSEMBLIES ARE UL RECOGNIZED PER FILE E26226 AND CSA CERTIFIED PER LR25154.
2. THESE HOUSING ASSEMBLIES ACCOMMODATE ANDERSON CONTACTS FOR WIRE RANGES FROM #2 AWG TO 1/0 AWG.
3. FOR ASSEMBLY INSTRUCTIONS, SEE DOCUMENT 1S1072.
4. HOUSINGS: POLYCARBONATE, UL94V0. SPRING: STAINLESS STEEL. FOR OTHER COLORS, CONSULT ANDERSON POWER PRODUCTS.

ITEM NO.	PART OR IDENTIFYING NO.	NOMENCLATURE OR DESCRIPTION	MATERIAL SPECIFICATION	QTY RECD
PARTS LIST				
DIMENSIONS ARE IN INCHES DIMENSIONS IN PARENTHESES [] ARE IN MILLIMETERS		CAD GENERATED DRAWING. DO NOT MANUALLY UPDATE		ANDERSON POWER PRODUCTS 1381-SERIES "POWERPOLE 180" HOUSING/SPRING ASSEMBLY UP TO 180 AMP APPLICATIONS
TOLERANCES ARE: 2 PLC. DECIMALS +/- .02 [+/- .5]		APPROVALS	DATE	
MATERIALS: SEE NOTE 4.		DRAWN	DJD 8/18/69	
FINISH AS MOLDED		CHECKED		
NEXT ASSY	USED ON	RESP ENG	ERU 11/7/72	SIZE
APPLICATION		MFG ENG		A
DO NOT SCALE DRAWING		QUAL ENG		DWG. NO. 1-9597S3
		SCALE - CAD FILE: 00834		REV. 5
		SHEET 1 OF 1		