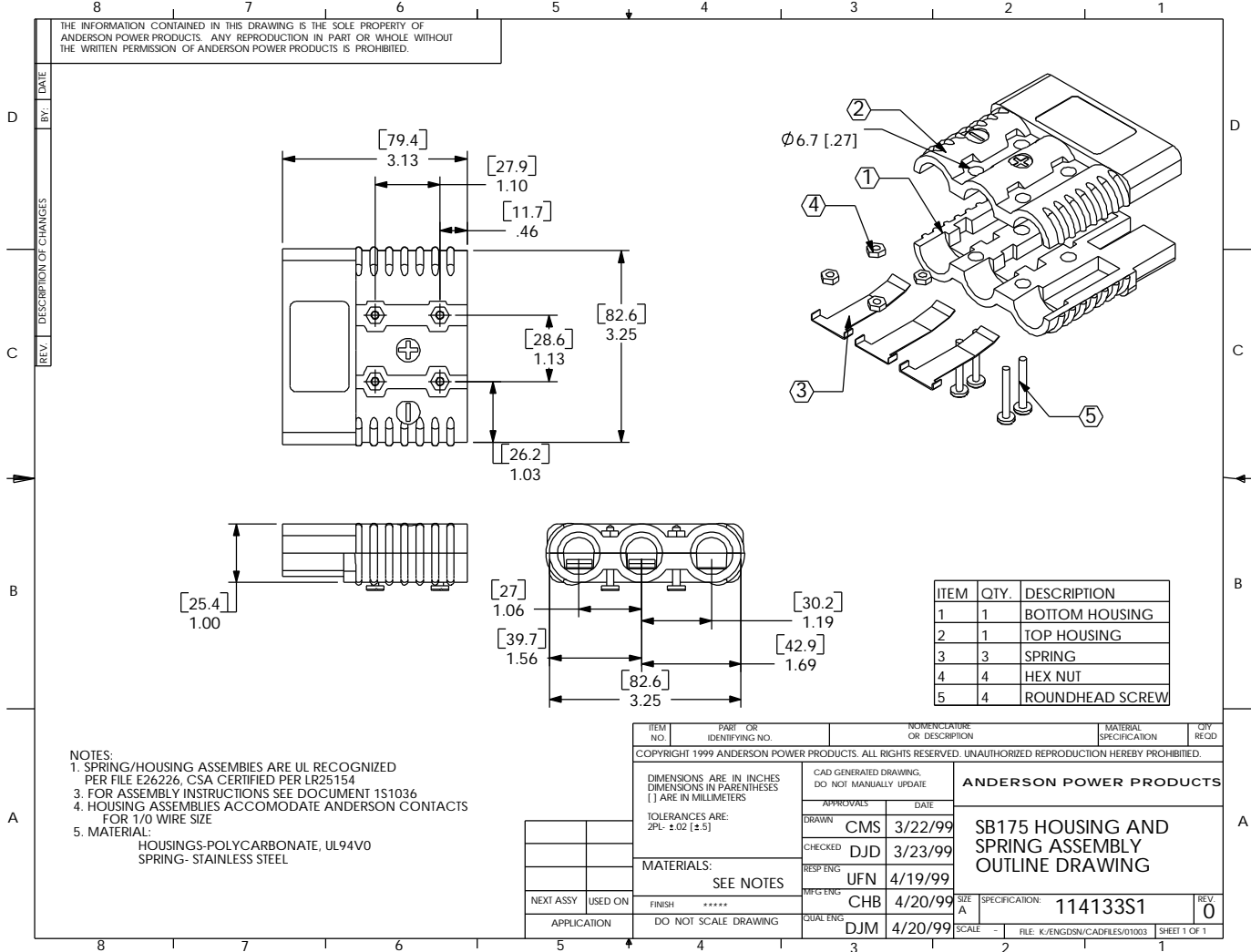


THE INFORMATION CONTAINED IN THIS DRAWING IS THE SOLE PROPERTY OF ANDERSON POWER PRODUCTS. ANY REPRODUCTION IN PART OR WHOLE WITHOUT THE WRITTEN PERMISSION OF ANDERSON POWER PRODUCTS IS PROHIBITED.



- NOTES:  
 1. SPRING/HOUSING ASSEMBIES ARE UL RECOGNIZED PER FILE E26226, CSA CERTIFIED PER LR25154  
 3. FOR ASSEMBLY INSTRUCTIONS SEE DOCUMENT 1S1036  
 4. HOUSING ASSEMBLIES ACCOMMODATE ANDERSON CONTACTS FOR 1/0 WIRE SIZE  
 5. MATERIAL:  
 HOUSINGS-POLYCARBONATE, UL94V0  
 SPRING- STAINLESS STEEL

NEXT ASSY	USED ON	FINISH	****
APPLICATION	DO NOT SCALE DRAWING		

ITEM NO.	PART OR IDENTIFYING NO.	NOMENCLATURE OR DESCRIPTION	MATERIAL SPECIFICATION	QTY. RECD.
COPYRIGHT 1999 ANDERSON POWER PRODUCTS. ALL RIGHTS RESERVED. UNAUTHORIZED REPRODUCTION HEREBY PROHIBITED.				
DIMENSIONS ARE IN INCHES DIMENSIONS IN PARENTHESES [ ] ARE IN MILLIMETERS		CAD GENERATED DRAWING. DO NOT MANUALLY UPDATE	ANDERSON POWER PRODUCTS	
TOLERANCES ARE: 2PL: ±02 [±.5]		APPROVALS	DATE	SB175 HOUSING AND SPRING ASSEMBLY OUTLINE DRAWING
MATERIALS: SEE NOTES		DRAWN	CMS 3/22/99	
		CHECKED	DJD 3/23/99	
		RESP ENG	UFN 4/19/99	
		MFG ENG	CHB 4/20/99	
		CUAL ENG	DJM 4/20/99	SIZE A
			SPECIFICATION: 114133S1	REV 0
			SCALE: -	FILE: K:/ENGDGN/CADFILES/01003 SHEET 1 OF 1